



BOTTLE CRUSHER



Model : **GLS2.0**
expleco.com

INSTRUCTION MANUAL

CE

IMPORTANT!

PRIOR TO OPERATION ALL USERS MUST READ THE ENTIRE INSTRUCTION MANUAL

Expleco Ltd has an ongoing development programme and the product pictured may differ slightly in appearance.

Specifications are subject to change without notice.



WARNING

BEFORE USING THIS PRODUCT PLEASE READ THE FOLLOWING SAFETY PRECAUTIONS, TO AVOID PERSONAL INJURY. IT IS IMPORTANT TO UNDERSTAND THE APPLICATIONS, LIMITATIONS AND POTENTIAL HAZARDS ASSOCIATED WITH THIS PRODUCT.

1. This machine is designed to crush glass bottles **ONLY**
2. Do not use the **EXPLECO GLS2** for any other use.
3. The machine is not intended for use by young or infirm persons.
4. Children or visitors should be kept well away from the machine and should not be permitted to handle the machine or power cord.
5. The machine is designed for interior use. Do not use the machine in wet conditions.
6. Do not use the machine near flammable liquids or gases.
7. The power supply cable should be checked and certified at 6 monthly intervals by a registered electrician.
8. The power supply must be capable of delivering Single Phase 208-230v 60hz @ 20 amps for US market and 220-240v 50hz @ 15 Amps for Global Market . Extension cords must not be used unless they are heavy duty cords. Low amperage or excessive extension cord length will cause the overload reset button on the machines switch housing to trip out. After rectifying the power supply or extension cord the overload will need to be pressed in to reset, prior to starting the machine. **IMPORTANT** – The Power cord and all electric components are Megger Tested at factory as per the Certificate attached to the plug end of the main power cord. A qualified electrician must certify all Electrical functions before the expiry date of the initial certificate and then repeat on not more than 6 monthly intervals.



9. Protective eyewear and ear protection is recommended to be worn.
10. If handling broken bottles protective gloves must be worn.
11. Before starting the machine check the Bin level.
12. Never place bottles in the machine unless the machine is running .
13. Bottles must be inserted into the machine **Bottom First**.
14. Caps and all liquid must be removed from bottles prior to inserting into machine.
15. Do not use the machine if dust is emitting from the filter or inlet. This is an indication that the filter needs cleaning or Bin needs emptying.
16. In the rare occurrence of a bottle jamming protective gloves must be worn prior to opening the chute and removing the jammed glass.
17. Never service the machine, change components, or open the chute unless the power supply **HAS BEEN REMOVED FROM THE WALL SOCKET**.

OPERATING INSTRUCTIONS

1. Ensure that machine is plugged into a Single Phase 208-230v 60hz @ 20 amps for US market and 220-240v 50hz @ 15 Amps for Global Market. Ensure that Main Isolation Switch is turned to Start.



2. Check level in Bin. (must be 20 Litre Expleco Rectangular Bin) and lower machine onto Bin seal using the T handle.
3. Push **START** Button.



4. Ensure that all bottle caps are removed. Feed bottles into machine **BOTTOM** first. Bottles can be fed immediately one after the other.
5. The machine has a Bin fill sensor that will activate the warning light at 2/3 full 20kg / 44lbs.

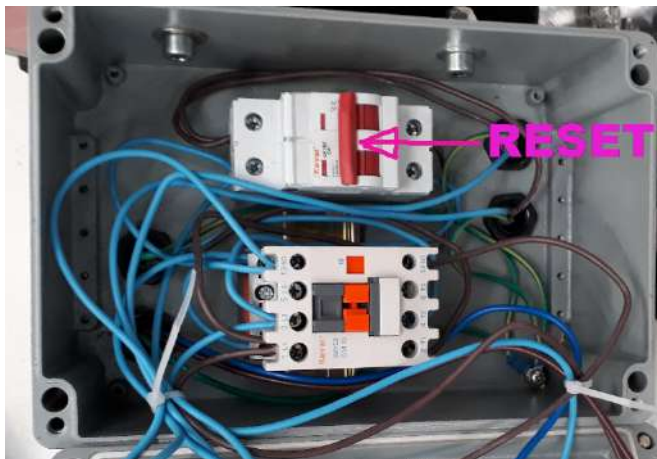


Pull jack handle towards you to lift housing/lid 50mm above Bin. Remove Bin to empty. Replace Bin by locating Bin firmly against white locator cleats. Push jack handle back to lower **bin to seal against foam seal on lid**. Jack handle must be pushed back until nearly vertical and then released. This will ensure that the Bin is properly sealed. To ensure seal only use the Expleco Bin !!

6. To adjust the Bin weight that activates the warning light turn the Bin Sensor Screw clockwise to increase sensed weight and anti-clockwise to decrease sensed weight. Only adjust $\frac{1}{2}$ turn at a time.



7. To stop machine press red **STOP** button.
8. If Chute is closed and Main Isolation Switch is set to Start and there is no response when START button is pushed then the Main Isolation Switch should be set to STOP and a qualified electrician should check internal wiring, Main contactor, Switch function and/or tripped Miniature circuit breaker.



Bottle Jam

1. On the rare occasion that a bottle jams in the feed in chute or stalls the motor, carry out the following procedure. Inserting large bottles neck first can cause jam if neck breaks off short – So **Bottom First** is best.
2. If motor is still running use T jack handle clear bottle jam. The T of handle will not allow contact with machine flails.

3. If motor stalled turn machine off and pull power supply plug from wall socket.
4. Open the chute by pressing the release on the Over Centre catch.



5. As an absolute safety measure unplug the power cord. Using protective gloves remove the jammed bottle or clogged glass from the chute and/or main housing. Check that the main rotor and flail assembly turns freely.
6. The Chute is protected by an interlock that is preset at the factory. This should be regularly tested to ensure that it locks the machine out when chute is opened. To test, close the chute and ensure that you hear the sensor click when the contact bolt pushes the sensor at least 3mm 1/8" below the metal plate.



The contact bolt can be adjusted by undoing the lock nut and adjusting the bolt to the height the click is heard + two more clockwise turns. Test by opening chute and try to start motor. All start buttons should be dead.

7. Clean glass grit from the rubber chute/housing gasket. Also ensure that glass is cleaned from the bin sensor brackets so that the bin tray can move freely.



8. Properly secure the chute ensuring that the safety catch has locked the over centre catch closed. Ensure that the chute seal is compressed lightly to ensure a proper seal. To tighten the seal pressure adjust the length on the catch.
9. If overload protector tripped during the jam you will need to reset the overload on the switch housing by pushing it in.



10. Restart the machine.

Chute Inlet Kevlar Protective Flaps Inspection/Replacement

1. The inlet protector flaps protect the operator from ejected glass particles. The flaps should be replaced immediately if they become damaged and allow any glass particles to be ejected.



2. Wearing of holes in top shroud could allow glass particles to be ejected. This could occur after production of 50-60,000 bottles. It must be immediately replaced if holes appear in shroud.



Filter Clean/Replacement

1. If visible dust is seen coming from the filters or main inlet, it is an indication that the filters need cleaning or the Bin is overfull. Filters can be removed and cleaned with a vacuum cleaner.
2. Filters can also be cleaned by tapping on top of filter with knuckles so that the accumulated dust is dislodged from the primary filter and falls down into Bin.



Bearing grease.

1. The machine is pre-greased in the factory.
2. If the machine makes an intermittent or consistent squeak the main bearing will need greasing.

3. With the machine running pump grease into the grease nipple on the top of the main bearing. Wait between each pump and when squeak stops give one more pump. Do not over grease.
4. As a rough rule of thumb you may find that you need to grease once every 4-5000 bottles.

Consumable Items

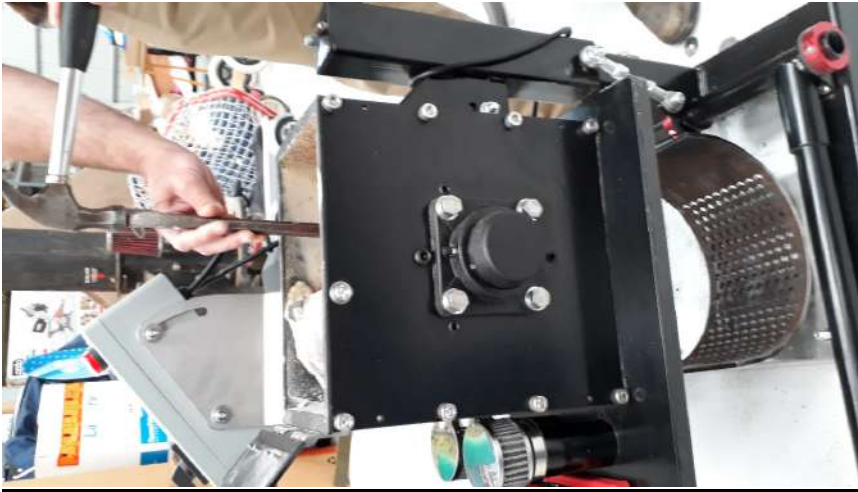
1. The EXPLECO GLS2 has specialised internal components which are made from high tech abrasion resistant materials which eventually need replacing. These parts are readily available for purchase from Expleco or your machine supplier. The parts must be installed by a factory approved service technician.
2. The consumable items and indicative life are as follows. Heavy Champagne bottles have a wear rate of 8-10 small coke or beer bottles.
 - 15 x Hi-Chrome Hammers - 20-50,000 bottles
 - Main Screen - 10-20,000 bottles
 - Top screen shroud - 20-50,000 bottles
 - Main Bearing - 50,000 bottles
 - Bins – available as required. Only use the Expleco Bin

These are average component lives. You may get a longer life from some components. If in doubt contact your supplier or Expleco.

Screen Replacement



Remove 2 lower bolts on each side of housing. Use 8mm Allen Key located on Tool rack on top of stand.



Knock Old Screen to drop out of bottom of housing

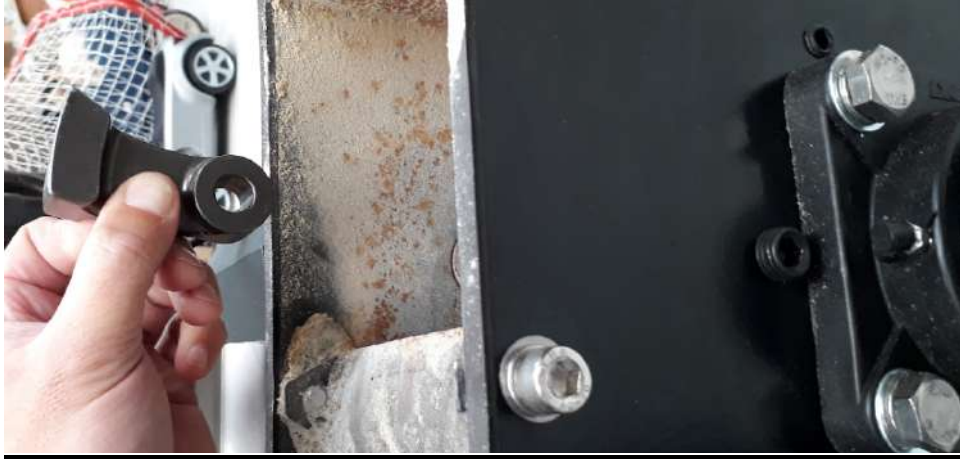


Fit new screen by rotating into place and re bolting using Expleco supplied bolt. Ensure that bolts are not protruding through the screen.

Hammer Replacement



Liberalily apply WD40 or similar to the hammer pin flail ends. Use M6 puller located in tool rack on top of jack stand. Remove the M16 Allen key that is just above the main bearing. Rotate Flail Shaft until hammer pins are aligned. Clean M6 thread in end of hammer pin and wind puller pin into end of hammer. Tighten m6 nut on puller to extract the hammer pins.



Ensure that hammers are replaced with curved face to the forward face of housing as shown above.

Tool rack on top of Jack Stand.



8mm Allen Key - for all Cap screws on Machine and also to be used to raise the control box from shipping mode to operational mode and then re-tighten.

Hammer Pin Puller - M6 bolt with heavy washer and M6 nut

Motor Push Bolt – To be used to assist removal motor if required. This bolt is to be threaded into flailshaft after removal of plastic bearing cap. There is a floating pin in this shaft that will allow the bolt to push on the motor shaft. Ensure all motor attachment bolts / nuts are loosened and also ensure that adapter plates are free by using a large screwdriver to wedge between flail shaft and motor adapter flange on inside of main housing. When this is wedged you will note the adapter flange moving.

You can then apply pushing pressure by winding the M12 bolt into end of flail shaft.

Safe Movement of machines

The machines are fitted with handling wheels to enable the machines to be moved safely over level and even ground. If ground is unlevel then it is advisable to strap machine to suitably rated hand trolley for safe secure movement. The machines are easily moved by dragging by pulling towards you with both hand on flange at top of red collar.

Residual risks and Disposal

All parts of the machines are able to be recycled. There are no residual toxic or hazardous substances or materials used in the manufacture of the machines. At the end of the machines useful life it is important that the machine and its parts are disposed of in an environmentally safe manner and in accordance with the local laws in place at the time of disposal.

Trouble Shooting

Trouble	Probable cause	Remedy
Squeak or Whistling Noise	1. Dry Bearing 2. Main Shaft Misalignment	1. Grease Bearing 2. Contact supplier and have shaft re-aligned.
Unusual Vibration or knocking sound	1. Main Shaft Misalignment 2. Damaged Hammers or Flail	1. Contact supplier and have shaft re-aligned. 2. Replace damaged Hammer Set.
Overload Switch Trips regularly	1. Bearing Failure 2. Power Supply Inadequate 3. Extension cord too long. 4. Main Shaft Misalignment as referred above.	1. replace main Bearing 2. Ensure 240v 10amp supply. 3. Use shorter or Heavy Duty Extension.
Dust Leaks from Bin Lid	1. Jack not lowered correctly 2. Bin seal leaking 3. Incorrect diameter Bin	1. Ensure Lid is central on Bin and jack lever is release in vertical position. 2. replace Bin seal. 3. replace with Expleco Bin.
Dust is visible from inlet and/or filter	1. Full Bin 2. Main Filters clogged	1. empty Bin 2. Clean or replace main filters.
Main Isolation Switch is set to START but Push button start is dead.	1. MCB needs reset 2. Wiring or contactor fault 3. Overload needs reset	1. reset overload 2. Contact Electrician
Bin Weight is too heavy or too light when Warning Light activates	1. Needs Sensor Adjustment	1, Turn clockwise to increase sensed weight. 2. Turn anti clockwise to decrease sensed weight
Bin Sensor not activating or staying on.	1. Glass chips are jamming between tray and spring brackets	1. Clean away glass chips by depressing tray and vacuuming clear.



EC Declaration of Conformity

We **Expleco Limited**
Of **31 Windhawk Rise,
RD2 Blenheim 7272**
Marlborough,
NEW ZEALAND

declare that the product.

Product Name; **EXPLECO Bottle Crushing Machine**

Series. **GLS, GLS2, GLC, PET**

Is in conformance with the provisions of the following EC Council Directives.

Machinery Directive 2006/42/EC

Under Conformity Assessment Method in accordance with Annex VIII

And has components fitted that conform with the following EC Council Directives.

Low Voltage Directive 73/23/EEC (amended by 93/68/EEC)

In conformity with IEC 60034-1:1997 + A1:1997 + A2:1999

EMC Directive 89/336/EEC (amended by 92/31/EEC, 93/68/EEC and 98/13/EC)

In conformity with AS/NZS CISPR14.1 and IEC 204-1

Noise Emission Declaration under section 1.7.4.2(u) of 2006/42/EC

A – Weighted Sound Pressure Level at workstation 1m from machine

Machine Running no load **68dB(A)**

Machine Crushing Bottles **82 dB(A) – 85 dB(A)** (dependent on bottle size and density)

A - Weighted Sound Power Level emitted by the machinery

Machine Crushing Bottles **90 dB(A) – 93 dB(A)** (dependent on bottle size and density)

NOTE! Noise from crushing function is intermittent with duration of 2-5 seconds per bottle.

A handwritten signature in blue ink, appearing to read "Tim Barnett".

Signed by _____
Tim Barnett
Managing Director
Expleco Ltd



DATE September 15 2020

GUARANTEE

Expleco Limited guarantees this product from defects of materials and workmanship for a period of twelve months from date of purchase provided that the product is used in accordance with the recommendations set out in this instruction manual and with voltage and current limits set out on the motor plate. Expleco Limited will at its own option make good, replace the complete machine (or defective component) with the same or similar product, or provide credit for any product manufactured or supplied by it, which proves to be defective within the limits set out above provided that always no repairs, modifications or alterations to the product have been undertaken or attempted, other than by the company or its authorised agents. Should the purchaser wish to make a claim under the guarantee, the product should be returned pre-paid to the place of purchase.

To obtain the warranty the purchase receipt along with serial number must be returned with the machine. This guarantee is in addition to and does not take away from any rights available to the consumer under the Consumer Guarantees Act.

A TWELVE MONTH GUARANTEE APPLIES TO THIS PRODUCT FOR DOMESTIC AND LIGHT INDUSTRIAL USE ONLY. (Bars, restaurants, cafes, hotels, motels, lodges, charter vessels and other intermittent light industrial sites)

THE GUARANTEE IS APPLICABLE FROM THE ORIGINAL DATE OF PURCHASE

TO OBTAIN THE WARRANTY THE PURCHASE RECEIPT MUST BE RETURNED WITH THE MACHINE.

THE GUARANTEE EXCLUDES:

- **DAMAGE, MALFUNCTION OR FAILURE DUE TO NEGLIGENCE, MISUSE OR ABUSE**
- **DAMAGE MALFUNCTION OR FAILURE DUE TO USE IN CONTINUOUS AND/OR HEAVY INDUSTRIAL APPLICATIONS.**
- **DAMAGE, MALFUNCTION OR FAILURE DUE TO USE IN APPLICATIONS THAT THE MACHINE IS NOT DESIGNED TO PERFORM.**
- **CONSUMABLE COMPONENTS AND ACCESSORIES.**
- **REPAIRS, MODIFICATIONS, OR ALTERATIONS ATTEMPTED OR MADE TO THE MACHINE BY OTHER THAN AN AUTHORISED AGENT.**

© This Instruction Manual is subject to copyright and must not be reproduced, copied or otherwise used in any way or for any purpose without the consent in writing of Expleco Limited